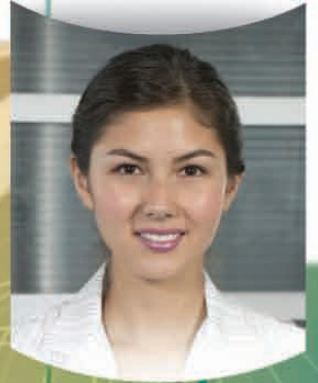


Canon



CORPORATE SOLUTIONS



 **imageRUNNER®**
3245 / 3245i

 **imageRUNNER®**
3235 / 3235i

meap
POWERED BY I

CORPORATE SOLUTIONS

INTRODUCING THE imageRUNNER 3245/3245i/3235/3235i MODELS

Seamless Integration to Let Your Business RUN

The new Canon imageRUNNER 3245/3245i/3235/3235i models will capture the imagination of businesses that want to run their offices more seamlessly and captivate users with intuitive features that increase productivity. Now companies and workgroups can truly achieve their business goals and perform like never before through tighter integration with existing infrastructures and enhanced usability.

Why settle for less when the imageRUNNER 3245/3245i/3235/3235i models are well within your reach? From copying to scanning, printing to storing, and sending to customizing, there's no better solution for workgroups and small offices. Featuring a new system

architecture that's both highly compact and customizable, it's never been so easy to connect your total enterprise.

Two different versions of the devices are available—an “i” model and a “Base” model. The “i” model comes bundled with many standard features for out-of-the-box business productivity, such as PCL 5e/6 support, PostScript® 3™ emulation, and advanced sending capabilities. The “Base” model is highly configurable and offers a selection of options to best fit your unique environment.

Function	imageRUNNER 3245/3235	imageRUNNER 3245i/3235i
Copy	Standard	
Mail Box	Standard	
Print	Standard: UFR II Optional: PCL 5e/6, PostScript 3 Emulation	Standard: UFR II, PCL 5e/6, PostScript 3 Emulation
Scan	Standard: Color Network ScanGear	
Color Universal Send	Optional: Color Universal Send* Optional: Advanced Feature Set** Optional: Security Feature Set***	Standard: Color Universal Send Standard: Advanced Feature Set** Standard: Security Feature Set***
Super G3 Fax	Optional (1, 2, or 3 lines)	
Web Access	Optional	
USB Memory Support	Optional	
MEAP®	Standard	

* Color U-Send Trial Kit Standard.

** Includes High Compression, Searchable, and Trace & Smooth Modes.

*** Includes Digital Device Signature and Encrypted PDF.

EXPERIENCE HEIGHTENED PERFORMANCE AND MORE ADVANCED FEATURES

New Canon imageCHIP II System Architecture

- Provides faster processing and interface response time
- 3245/3235 models: standard 512MB RAM + 256MB RAM
3245i/3235i models: standard 1GB RAM + 256MB RAM
- Dedicated dual processor design
- Optional USB memory device support
- Mail Box for local document archival



imageCHIP II

High-Quality Print Performance

- Standard UFR II Print Controller
- PCL and PostScript 3 emulation standard on 3245i/3235i models (optional on 3245/3235 models)
- Up to 1200 x 1200 dpi printing

Compact Productivity

- Internal Finisher
 - Up to 50-sheet corner stapling
 - Up to 1,000-sheet capacity
 - Optional second tray for sorting
 - Optional hole-punch capabilities
- Inner 2-Way Tray Option
 - Two output trays for 350-sheet total capacity

Accessibility

- Voice Guidance Kit
- Voice Operation Kit
- Accessibility Handle
- Braille Label Kit

Device Management and Security

- HDD Encrypt and Erase
- Removable HDD
- Access Management System
- Updated Single Sign-On Feature
- Department ID Security
- Internet Protocol Security (IPsec)
- imageWARE Enterprise Management Console
- Device Information Delivery Function

Efficient Speeds

- Output at up to 45/35 pages per minute
- New high-quality color scanner standard
- Standard 100-sheet DADF, with scan speeds up to 51 ppm
- Quick 35-second warm-up time and less than 4-second first-copy-out time

Reliable Consumables and Supplies

- Easy-to-replace Set-On Toner cartridge
- On-the-fly toner replacement



Toner

Superior Paper Handling

- Up to 4,950-sheet paper capacity
- Standard dual 550-sheet paper cassettes
- Standard 50-sheet Bypass Tray



Maximum Paper Supply



ENHANCED DOCUMENT PRODUCTIVITY AND USABILITY

RUN your projects reliably. RUN your workflows smoothly.

POWERFUL NEW SYSTEM ARCHITECTURE

The imageRUNNER 3245/3245i/3235/3235i models are built upon Canon's new imageCHIP II System Architecture for even greater multitasking capabilities and faster processing and response times.

HIGH-SPEED DUPLEX COLOR SCANNING

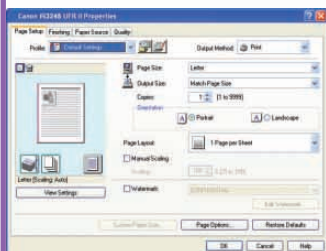
Whether you need to capture a single page or scan reams of paper, the imageRUNNER 3245/3245i/3235/3235i models can quickly create copies and electronic color versions of your original documents. You can even import documents into TWAIN-compliant applications on the desktop.



Duplexing Automatic Document Feeder

NETWORK PRINTING WITH EXCEPTIONAL CLARITY

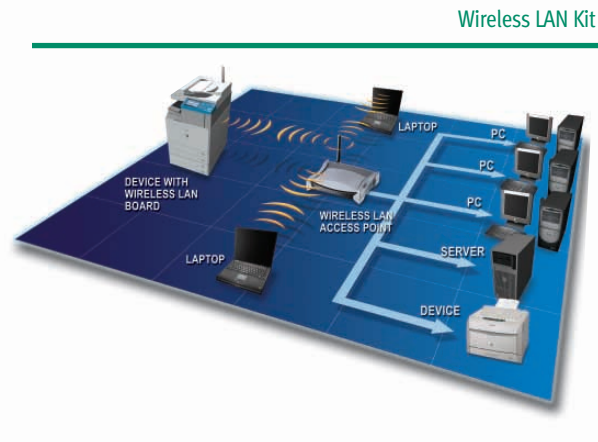
With Standard UFR II print technology, any of the Canon imageRUNNER 3245/3245i/3235/3235i models are also network-enabled printers. This Canon proprietary technology is optimized to facilitate high-speed printing by utilizing the user's desktop computer for data processing. Support for PCL5e/6 and PS3 emulation is also available. Users will appreciate the high-quality output at resolutions of up to 1200 x 1200 dpi for stunning results.



UFR II Print Driver

WIRELESS LAN CONNECTIVITY

Connecting your imageRUNNER 3245/3245i/3235/3235i models to a local area network has never been easier thanks to the Wireless LAN connectivity option. This wireless technology supports 802.11 g/b standards and includes security encryption protocols.



CONSOLIDATE MULTIPLE FAX DEVICES

Busy offices that need more than one or two phone lines for faxes can consolidate stand-alone devices into one with support for up to three fax lines. Canon's fax driver also allows users to fax documents right from their desktop computer for even greater productivity.

STOP WAITING AND START WORKING

Are you tired of waiting for your output on other printers? The imageRUNNER 3245/3245i/3235/3235i models include Canon's RAPID Fusing System, which delivers virtually zero waiting time between jobs for nonstop productivity, fast warm-up times, and reduced energy consumption.

INTEGRATION WITH USB INTERFACE

Portable USB memory devices have become a part of the everyday workflow in many office environments. The Canon imageRUNNER 3245/3245i/3235/3235i models can become a part of that workflow with the ability to directly print from or scan to a USB memory device with support for PDF, JPEG, or TIFF file formats.* You can also connect an external keyboard through the device's USB interface to more easily and quickly enter send-to destinations, file names, and more.

EASY-TO-OPERATE CONTROL PANEL

Canon realizes that the power of any device is affected by the intuitiveness of the interface. To unlock the full potential of the imageRUNNER 3245/3245i/3235/3235i models, the control panel has been designed with a new TFT touch-screen, providing a wider viewing angle and greater contrast to facilitate operation.

Control Panel



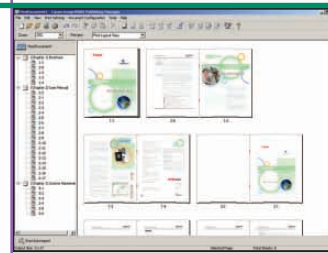
ELECTRONIC OPERATOR MANUALS

Any questions you might have while using the Canon imageRUNNER 3245/3245i/3235/3235i models can be answered with the new HTML-based Operator Manual. Information can be searched, printed, and even bookmarked through a Web browser.

PROFESSIONAL DOCUMENT PRODUCTION FROM THE DESKTOP

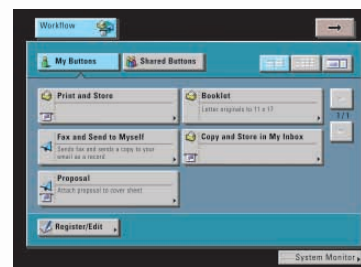
When you need to produce impressive documents such as reports, booklets, brochures, or tabs, Canon's imageWARE Publishing Manager software option provides powerful desktop tools. Documents can be created through a simple drag-and-drop interface with files from many different sources, including databases, Microsoft® Word, Excel, PowerPoint®, Web pages, or spreadsheets. A number of editing, annotating, stamping, endorsing, watermarking, and imposing tools are available as well.

imageWARE Publishing Manager



ACHIEVE OPERATIONAL EFFICIENCY

Breeze through complex tasks and help to reduce operator errors with the Workflow Composer option for the Canon imageRUNNER 3245/3245i/3235/3235i models. Workflow Composer enables users to configure one button to perform multiple actions, such as copying, sending, and storing at the device in a single step. For even greater convenience, workflow buttons can also be created and edited from desktop with Workflow Composer Editor.



Workflow Composer Screen

* Requires the USB Memory Connectivity Kit. For the imageRUNNER 3245/3235 models, the PS Printer Kit-AA1 or the Direct Print Kit-F1 is required for printing from USB Memory device.

STREAMLINED DOCUMENT DISTRIBUTION AND MANAGEMENT

RUN your ideas actively. RUN your archives effectively.

COMMUNICATE BRILLIANTLY WITH COLOR UNIVERSAL SEND

Sending documents to recipients across the office or around the world is easier than ever with Canon's Color Universal Send technology.* This helps users to quickly distribute scanned documents to multiple network destinations—such as e-mail and Internet fax addresses, local Mail Boxes, fax, network folders, and WebDAV servers—in a simple operation.

Destinations can be entered manually or searched in the local Address Book or LDAP servers on the network. Scanned documents can be sent in TIFF, PDF, JPEG, or XPS format.

Color Universal Send Main Screen



High Compression Mode

FILE SIZE COMPARISON

Original: Letter-Sized Hard Copy (Color Graphics with Text)

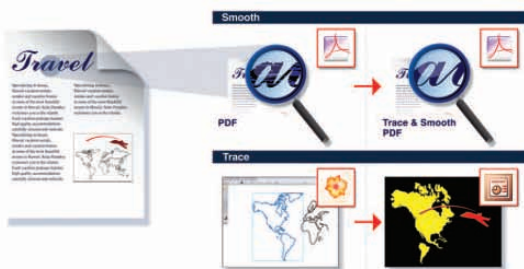


Canon's PDF (Compact)
300-dpi Color Scan
File Size: **150 KB**

PDF File Format
300-dpi Color Scan
File Size: **2 MB**

PDF File Format
300-dpi B/W Scan
File Size: **390 KB**

Trace & Smooth PDF Mode



Universal Send



ADVANCED SENDING FEATURES

For more powerful ways to send documents, the Universal Send Advanced Feature Set* provides additional features to master the creation, distribution, and archiving of your documents.

Canon's proprietary High Compression Mode can significantly reduce the size of PDF/XPS files to send color documents faster. The Trace & Smooth PDF feature can convert text, line art, and graphics in scanned documents to scalable artwork (vector graphics data) that's less jagged at the edges and can be manipulated in Adobe® Illustrator® to create elements for other documents. After scanning for digital creation, Searchable PDF/XPS Mode embeds the text within the file to enable extraction or keyword searches.

* Standard on imageRUNNER 3245i/3235i models; optional on imageRUNNER 3245/3235 models but Trial Kit is standard.

DOCUMENT STORAGE AND MANAGEMENT

Streamline your document storage tasks with the Mail Box feature—a great solution for frequent reprinting of forms and static documents. Each Mail Box can be personalized with a user name, password, and document deletion period. The Copy and Store and Store and Print functions streamline workflows by combining multiple tasks and ensuring that a digital original is automatically archived.

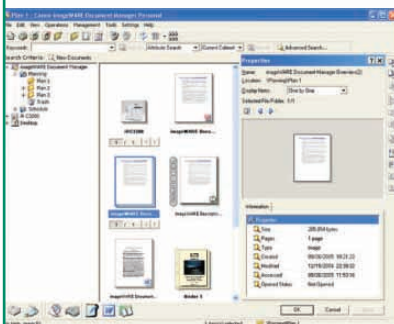
Take control of your document storage and retrieval with Canon's imageWARE Document Manager Personal. This software enables you to capture, archive, edit, retrieve, and manipulate documents stored in a Mail Box right from your desktop computer, seamlessly integrating your workspace with the device. For archiving your critical business documents and records throughout the organization, imageWARE Document Manager Workgroup and imageWARE Document Manager Enterprise Editions can store vast amounts of information in a centralized electronic repository.



WEB BROWSING AND PRINTING

With Canon's Web Access software option, you can browse the Web or corporate intranets directly from the device's color touch-panel.*

Print Web pages or PDF files from the Internet or your network—even when you don't have access to a computer—with the Web Access Software option.**



imageWARE Document Manager Personal

* Requires Web Access Software-G1. Requires Additional Memory Type A on imageRUNNER 3245/3235 models to view Flash contents on Web pages.

** Requires PS Printer Kit-AA1 or Direct Print Kit-F1 on imageRUNNER 3245/3235 models to print PDF files.

ROBUST DEVICE MANAGEMENT AND SECURITY

RUN your applications harmoniously. RUN your communications securely.

NETWORK USER ACCOUNT INTEGRATION

Protect your device against unauthorized use with security features that seamlessly integrate with your existing network infrastructure. With the new version of Single Sign-On (SSO), up to 5,000 users can be authenticated on the device against a domain server using the same network credentials and without requiring any additional server. This updated SSO feature also integrates with the optional Access Management System to provide more granular control over device permissions.

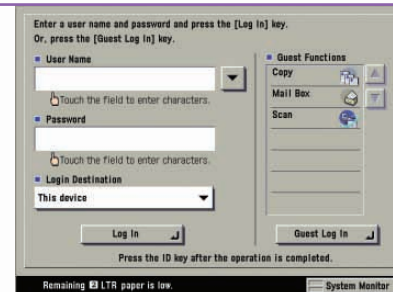
FLEXIBLE USER AUTHENTICATION METHODS

Canon offers several authentication methods to meet the needs of nearly any environment when deploying a single device or an entire fleet. In addition to network authentication with SSO accounts, administrators can also choose from Department ID Mode or Simple Device Log-In (SDL). With Department ID Mode, device access is controlled with user names and passwords stored locally. SDL is an enhanced form of Department ID where each user enters his or her personal ID and password below the proper Department ID for greater tracking capabilities.

ADVANCED USER AND GROUP-LEVEL DEVICE ACCESS

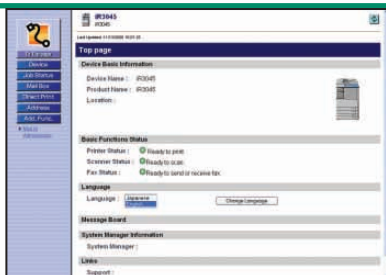
In environments that require more sophisticated permissions to the functions and features that are accessible to users, the optional Access Management System delivers precise control. This system allows administrators to create as many as 100 roles that define privileges and can then be assigned to each user or groups of users. These privileges can be used to restrict access to functions such as print, fax, scan, copy, and send as well as features within each function, such as 2-on-1 copying.

Access Management System Screen



The screenshot displays a login interface for the Access Management System. It features a header with instructions: "Enter a user name and password and press the (Log In) key. Or, press the (Guest Log In) key." Below this are three main input sections: "User Name" with a dropdown menu and a "Touch the field to enter characters" prompt; "Password" with a text input field and a similar prompt; and "Login Destination" with a dropdown menu set to "This device". To the right, under "Guest Functions", there are icons for "Copy", "Mail Box", and "Scan". At the bottom, there are "Log In" and "Guest Log In" buttons. A status bar at the very bottom indicates "Remaining 83 LTR paper is low." and a "System Monitor" icon.

Remote UI

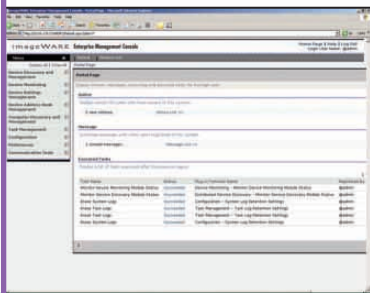


REMOTE DEVICE MANAGEMENT

If you have ever needed to check the status of a print device from your desk, track the progress of your current jobs, or monitor paper and toner levels, then you'll appreciate the standard Remote UI utility. This utility provides access to the device through a standard Web browser from any computer on the network and also allows administrators to remotely manage Mail Boxes and the local Address Book.

ENTERPRISE-WIDE DEVICE MANAGEMENT

Administering a fleet of devices can be cumbersome without the right tools. That's why Canon developed imageWARE Enterprise Management Console (EMC), a Web-based utility that facilitates centralized control over networked devices. Built upon an extensible framework, it enables remote management of device settings, discovery of new devices using automated tasks, and device error notifications via e-mail. Administrators can also easily replicate Address Books across multiple devices through the Device Information Delivery Function (DIDF) and push print drivers to PC-based desktop computers for rapid deployment.



imageWARE Enterprise Management Console

DEFENSE AGAINST NETWORK THREATS

Beyond user-level authentication, the Canon imageRUNNER 3245/3245i/3235/3235i models can also restrict network access to specific IP/MAC addresses and service ports. And with IPv6 support built-in, the device is ready to meet your future network infrastructure requirements. Optional IPSec support can also add an additional layer of network security.

PROTECTING THE SECURITY OF YOUR DATA

Protect your imageRUNNER 3245/3245i/3235/3235i model with advanced features that guard against unauthorized data access. To protect your stored, scanned, and printed data, the HDD Data Erase Kit option automatically overwrites previously stored data. The HDD Data Encryption Kit option provides additional security by encrypting data before it's committed to the hard disk drive. Both kits have achieved EAL3 Common Criteria (CC) certification. For environments desiring the ability to easily remove the internal hard drive when the device isn't in use, a Removable Hard Disk Drive option is also available.

Device Management and Security Overview

Document Security

- Encrypted Secured Print
- Watermark/Secure Watermark
- Copy Set Numbering
- Encrypted PDF
- Digital Signature PDF
- Digital Signature XPS
- FAX Forwarding
- Fax Destination Confirmation

Mail Server Security

- POP Authentication before SMTP
- SMTP Authentication

Network Security

- MAC Address Filtering
- IP Address Filtering
- Network Application On/Off
- USB Block
- Destination Restriction
- IPSec
- IEEE802.1x (Wire/Wireless)

HDD Security

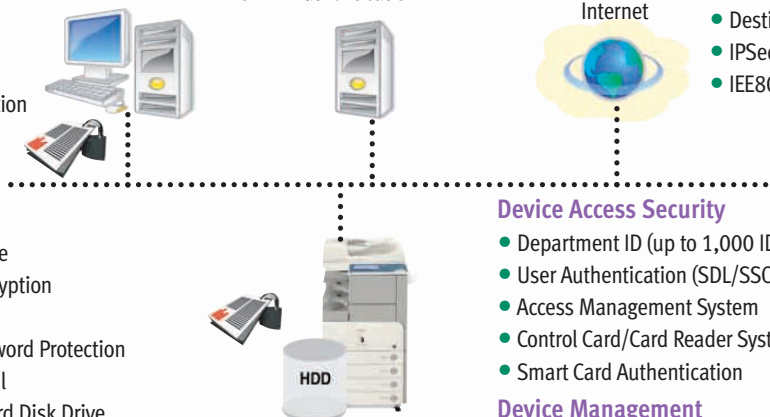
- HDD Data Erase
- HDD Data Encryption
- HDD Format
- Mail Box Password Protection
- Job Log Conceal
- Removable Hard Disk Drive

Device Access Security

- Department ID (up to 1,000 IDs)
- User Authentication (SDL/SSO)
- Access Management System
- Control Card/Card Reader System
- Smart Card Authentication

Device Management

- DIDF (Device Information Delivery Function)
- imageWARE Enterprise Management Console



ENVIRONMENTALLY-CONSCIOUS AND EASILY ACCESSIBLE

RUN your resources efficiently. RUN your devices universally.

FEATURES DESIGNED TO SAVE ENERGY AND CONSUMABLES

Canon takes the preservation of our environment seriously and has developed a number of technologies that promote resource conservation. At the core of the imageRUNNER 3245/3245i/3235/3235i models is the RAPID Fusing System, which is more energy-efficient than conventional systems. This allows for quick start-up times, resulting in less energy consumption. Each model is ENERGY STAR® qualified and uses less than 1W in Sleep Mode.

When it comes to saving on the costs of consumables such as paper and toner, the imageRUNNER 3245/3245i/3235/3235i models can help minimize the distribution of originals in hard-copy form with Universal Send. Features such as PC Faxing and Fax Forwarding also make it possible to send documents without the need to print them first.

If printed copies are needed, the intuitive drivers on the desktop make it easy for users to print on both sides of a page and even print multiple pages on a single sheet to help save paper.



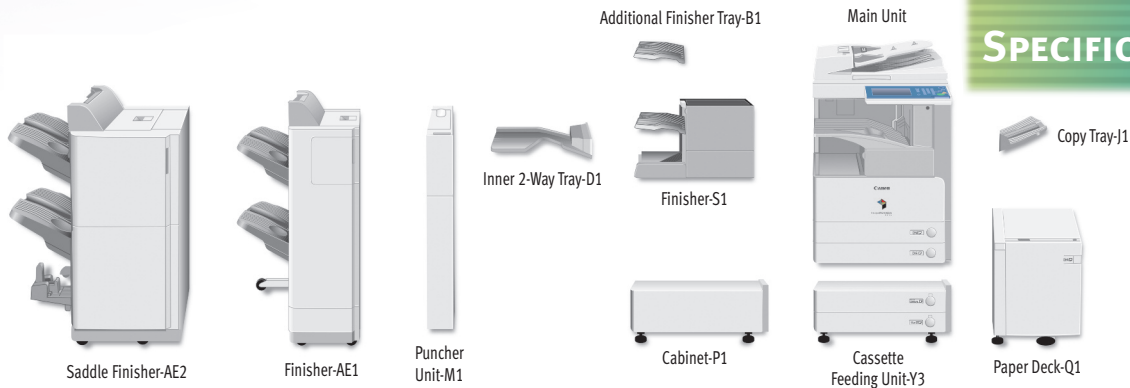
Voice Operation Kit

ENSURING ACCESSIBILITY FOR ALL AUTHORIZED USERS

Canon offers a number of options to ensure easy access for individuals with disabilities. Users have access to all system functions from a laptop or desktop PC using the Remote Operator's Software Kit option to emulate the device control panel on a computer monitor. Individuals with visual or mobility/dexterity impairments can receive audible confirmation of select functions with the Voice Guidance Kit, and control the device through spoken commands using the Voice Operation Kit.* The optional Braille Label Kit improves access to control panel functions by adding transparent labels to hard keys on the device, and the Access Handle option helps seated users to easily close the document feeder.

* For imageRUNNER 3245/3235 models, Additional Memory Type A is required to install Voice Operation Kit.

SPECIFICATIONS



MAIN UNIT

Type:	Monochrome Digital Multifunction Imaging System
Copying Method:	Laser Dry Electrostatic Transfer
Developing System:	Dry Monocomponent Toner Projection
Fixing System:	RAPID Fusing System
Std. Memory	imageRUNNER 3245/3235: 512MB RAM + 256MB RAM imageRUNNER 3245i/3235i: 1GB RAM + 256MB RAM
Max. Memory:	1GB RAM + 768MB RAM
Hard Disk Drive:	60GB
Copy/Print Speed (Letter)	imageRUNNER 3245/3245i: Up to 45 ppm imageRUNNER 3235/3235i: Up to 35 ppm
First-Copy Time:	3.9 Seconds (From Platen Glass) 5.9 Seconds (From DADF)
Warm-Up Time:	10 Seconds or Less From Sleep Mode 35 Seconds or Less From Main Power Off
Network Interface Connections:	10/100/1000 Base-TX (RJ-45), USB 2.0 (Device), USB 2.0 (Host) x 2
Acceptable Originals:	Sheets, Books, and 3-Dimensional Objects up to 4.4 lb.
Max. Original Copy Size:	11" x 17"
Min. Copy Size:	3-7/8" x 5-7/8" (Stack Bypass)
Acceptable Paper Sizes:	11" x 17", Legal, Letter, Letter-R
Scan Resolution:	600 x 600 dpi
Copy Resolution:	1200 x 600 dpi (Interpolated)
Print Resolution:	1200 x 1200 dpi*
Half-tone:	256 Gradations of Gray
Document Feeding Method:	100-Sheet Duplexing Automatic Document Feeder (Standard)
Duplexing:	Standard Automatic Trayless Duplexing
Paper Supply Standard:	Dual 550-Sheet Paper Cassettes + 50-Sheet Stack Bypass
Optional:	Dual 550-Sheet Paper Cassettes + 2,700-Sheet Paper Deck
Maximum:	4,950 Sheets
Acceptable Paper Sizes Upper Cassette:	Legal, Letter, Letter-R, Statement-R, Executive
Lower Cassette:	11" x 17", Legal, Letter, Letter-R, Statement-R, Executive
Stack Bypass:	11" x 17", Legal, Letter, Letter-R, Statement-R, Executive, Free Size (3-7/8" x 5-7/8" to 11-5/8" x 17"), and Envelopes
Acceptable Paper Weight Cassettes:	17 lb. to 24 lb. Bond
Stack Bypass:	17 lb. to 32 lb. Bond
Dimensions (H x W x D):	35-1/2" x 22-1/4" x 27-5/8" (901mm x 565mm x 700mm)
Weight:	181 lb. (82kg)
Power Requirements:	120V AC, 60Hz, 10A

Power Consumption:	1.41kW (Max.)
Plug:	NEMA 5-15P
Toner (Estimated Yield):	24,000 Impressions at 6% Image Coverage
Copy Features	
Multiple Copies:	1 - 999
Max. Copy Reservation:	20 Jobs
Exposure:	Automatic or Manual (9 Levels)
Magnification	
Preset Reduction:	25%, 50%, 64%, 73%, 78%
Preset Enlargement:	121%, 129%, 200%, 400%
Zoom Mode	
Platen:	25% - 400% (in 1% Increments)
DADF:	25% - 200% (in 1% Increments)
Print Features	
CPU:	Canon Custom Processor
Std. Memory	imageRUNNER 3245/3235: 512MB RAM + 256MB RAM (Shared) imageRUNNER 3245i/3235i: 1GB RAM + 256MB RAM (Shared)
Max. Memory:	1GB RAM + 768MB RAM (Shared)
Hard Disk Drive:	60GB (Shared)
Maximum Print Resolution:	1200 x 1200 dpi*
Supported PDL	imageRUNNER 3245/3235: Std. UFR II, Opt. PCL 5e/6, PS 3 em. imageRUNNER 3245i/3235i: Std. UFR II, PCL 5e/6, PS 3 em.
Supported OS	
UFR II:	Windows® 2000/XP/Server 2003/Windows Vista® Citrix MetaFrame Macintosh® OS X (OS 10.2.8 or later)
PCL 5e/6:	Windows 2000/XP/Server 2003/Windows Vista Citrix MetaFrame
PS 3 em.:	Windows 2000/XP/Server 2003/Windows Vista Citrix MetaFrame Macintosh OS X (OS 10.3.8 or later)
Mail Box Features	
Max. Mail Boxes Supported:	100 User Inboxes, One Memory RX Inbox, 50 Confidential Fax Inboxes
Scan Features	
Network TWAIN Scan:	Standard
Network Scan Utility:	Color Network ScanGear
Color Universal Send Features (Standard for 3245i/3235i models; Optional on 3245/3235 models)	
Color Mode:	Auto Color Select (Full Color/Grayscale) Auto Color Select (Full Color, B/W) Full Color Grayscale, B/W
Address Book Capacity:	Max. 1,800 Destinations (Includes 200 One-Touch Buttons) Max. 5 LDAP Servers
Sending Methods:	E-mail, I-fax, SMB, File Server (FTP, IPX, WebDAV), User Inbox, Super G3 Fax (Optional)
Communication Protocol	
File:	FTP (TCP/IP), SMB (TCP/IP), NCP (IPX), WebDAV
E-mail/I-fax:	SMTP, POP3, I-fax (Simple, Full)

Data Format	
File, E-mail:	TIFF, JPEG, PDF, XPS, PDF/XPS (Compact),** PDF (Trace & Smooth),** PDF/XPS (OCR),** Encrypted PDF,** Digital Device Signature PDF/XPS,** Digital User Signature PDF/XPS*
I-fax:	B/W: TIFF (MH, MR, MMR)
USB Memory Media	
Supported Applications:	Scan to USB Memory Media, Print from USB Memory Media
Supported Print File Formats:	TIFF, JPEG, PDF
Supported Scan File Formats:	TIFF, JPEG, PDF, PDF (Compact),** PDF (Trace & Smooth),** PDF (OCR),** Encrypted PDF,** Digital Device Signature PDF,** Digital User Signature PDF*
Required Accessories	
imageRUNNER 3245/3235:	USB Memory Connectivity Kit-A1, PS Printer Kit-AA1 or Direct Print Kit-F1 for printing
imageRUNNER 3245i/3235i:	USB Memory Connectivity Kit-A1
Duplexing Automatic Document Feeder	
Acceptable Originals:	Statement to 11" x 17"
Acceptable Weights	
One-Sided Scanning:	11 lb. to 32 lb. Bond
Two-Sided Scanning:	13 lb. to 32 lb. Bond
Paper Capacity:	100 Sheets (20 lb. Bond)
OPTIONAL ACCESSORIES	
Cassette Feeding Unit-Y3	
Acceptable Paper Sizes:	11" x 17", Legal, Letter, Letter-R, Statement-R, Executive
Paper Capacity:	Dual 550-Sheet Cassettes (1,100 Sheets at 20 lb. Bond)
Acceptable Paper Weight:	17 lb. to 24 lb. Bond
Weight:	Approx. 50.7 lb. (23kg)
Paper Deck-Q1	
Acceptable Paper Size:	Letter
Paper Capacity:	2,700 Sheets (20 lb. Bond)
Acceptable Paper Weight:	17 lb. to 24 lb. Bond
Dimensions (H x W x D):	18-5/8" x 14-5/8" x 23-1/4" (473mm x 372mm x 591mm)
Weight:	Approx. 65.3 lb. (29.6kg)
Inner 2-Way Tray-D1	
Number of Trays:	Two
Acceptable Paper Sizes:	11" x 17", Legal, Letter, Letter-R, Statement-R, Executive, Envelope, FreeSize (3-7/8" x 5-7/8" to 11-3/4" x 17")
Acceptable Paper Weight:	17 lb. to 32 lb. Bond
Paper Capacity Per Tray	
Upper Tray:	100 Sheets (LTR), 50 Sheets (Other Sizes)
Lower Tray:	250 Sheets (LTR), 100 Sheets (Other Sizes)
Attachable Accessories:	Copy Tray-1
Finisher-S1	

Specifications are continued on back.

Number of Trays: One (Second Tray Optional)

Acceptable Paper Sizes: 11" x 17", Legal, Letter, Letter-R, Statement-R, Executive, Envelope, Freesize (3-7/8" x 5-7/8" to 11-3/4" x 17")

Acceptable Paper Weight: 17 lb. to 32 lb. Bond

Tray Capacity
Non-collate, Collate, Group Mode: 1,000 Sheets (Letter, Statement-R) 500 Sheets (11" x 17", Legal, Letter-R)

Staple Mode: 1,000 Sheets/30 Sets (Letter) 500 Sheets/30 Sets (11" x 17", Legal, Letter-R)

Tray Capacity (with Additional Finisher Tray-B1)
Non-collate, Collate, Group Mode: 300 Sheets Per Tray (Letter, Statement-R) 150 Sheets Per Tray (11" x 17", Legal, Letter-R)

Staple Mode: 300 Sheets/30 Sets Per Tray (Letter) 150 Sheets/30 Sets Per Tray (11" x 17", Legal, Letter-R)

Staple Position
Top Left Corner: 11" x 17" (Landscape), Legal (Landscape), Letter, Letter-R
Top Right Corner: 11" x 17" (Portrait), Legal (Portrait)

Max. Stapling Capacity: 50 Sheets (Letter) 30 Sheets (11" x 17", Legal, Letter-R)

Attachable Accessories: Additional Finisher Tray-B1 Puncher Unit-R1 Copy Tray-J1

Puncher Unit-R1 (Option for Finisher-S1)
Acceptable Paper Sizes: 11" x 17", Legal, Letter, Letter-R
Acceptable Paper Weight: 17 lb. to 32 lb. Bond
Punch Type
Two Holes: Legal, Letter-R
Three Holes: 11" x 17", Letter
Punch Waste Capacity
Two Holes: Approx. 2,500 Sheets
Three Holes: Approx. 1,500 Sheets

Finisher-AE1/Saddle Finisher-AE2
Number of Trays: 2 Trays
Acceptable Paper Sizes: 11" x 17", Legal, Letter, Letter-R, Statement, Statement-R, Executive, Envelope, Freesize (3-7/8" x 5-7/8" to 11-3/4" x 17")
Acceptable Paper Weight: 17 lb. to 32 lb. Bond

Tray Capacity
Non-collate, Collate, Group Mode: 1,000 Sheets (Letter, Statement-R, Executive) 500 Sheets (11" x 17", Legal, Letter-R)

Staple Mode: 1,000 Sheets/30 Sets (Letter, Executive) 500 Sheets/30 Sets (11" x 17", Legal, Letter-R)

Staple Positions: Corner Staple, Double-Staple

Max. Stapling Capacity: 50 Sheets (Letter, Executive) 30 Sheets (11" x 17", Legal, Letter-R)

Saddle-Stitching*
Acceptable Paper Sizes: 11" x 17", Legal, Letter-R
Saddle-Stitch Capacity: 15 Sheets (60-Page Booklets)
Tray Capacity: 25 Sets (1 to 5 Sheets) 15 Sets (6 to 10 Sheets) 10 Sets (11 to 15 Sheets)
V-Folding

Folding:
Dimensions (H x W x D)
Finisher-AE1: 40-7/8" x 25-3/8" x 25-7/8" (1037mm x 643mm x 657mm)
Saddle Finisher-AE2: 40-7/8" x 29-3/8" x 25-7/8" (1037mm x 747mm x 657mm)

Attachable Accessories: Puncher Unit-M1

Puncher Unit-M1 (Option for Finisher-AE1/Saddle Finisher-AE2)
Acceptable Paper Sizes: 11" x 17", Legal, Letter, Letter-R
Acceptable Paper Weight: 17 lb. to 32 lb. Bond
Punch Type
Two Holes: Legal, Letter-R
Three Holes: 11" x 17", Letter
Punch Waste Capacity: Approx. 3,000 Sheets

PCL Printer Kit-AA1 (Standard for imageRUNNER 3245i/3235i Models)
PDL: PCL 5e, PCL 6
Internal Fonts: 80 Scalable Fonts, 30 Barcode, 10 Bitmap, 2 OCR Fonts
Supported OS: Windows 2000/XP/Server 2003/Windows Vista Citrix MetaFrame

PS Printer Kit-AA1▲▲ (Standard for imageRUNNER 3245i/3235i Models)
PDL: PostScript 3 Emulation
Internal Fonts: 136 Scalable Fonts
Supported OS: Windows 2000/XP/Server 2003/Windows Vista Citrix MetaFrame Macintosh OS X (OS 10.3.8 or later)

Super G3 Fax Board

Applicable Line: Public Switched Telephone Network (PSTN)

Connection Lines: Up to 3

Sending/Original Size: Statement to 11" x 17"

Receiving/Printing Size: Statement to 11" x 17"

OTHER OPTIONAL ACCESSORIES

- Cabinet-P1
 - FL Cassette-Y1 (replacement)
 - FL Cassette-Z1 (replacement)
 - Envelope Feeder Attachment-C2
 - Copy Tray-J1
 - Document Tray-J1
 - Card Reader-C1
 - Carder Reader Kit-B3
 - PCL Printer Kit-AA1°
 - PS Printer Kit-AA1°
 - Direct Print Kit-F1°
 - Barcode Printing Kit-A1▲▲
 - Encrypted Secure Print Software-C1▲▲
 - Color Universal Send Kit-P1°
 - Universal Send Advanced Feature Set-B1†††°
 - Universal Send Security Feature Set-B1†††°
 - Digital User Signature Kit-B1
 - eCopy Suite
 - Web Access Software-G1†
 - USB Memory Connectivity Kit-A1
 - Secure Watermark-A1
 - Super G3 Fax Board-AC1
 - Super G3 2nd Line Fax Board-AC1
 - Super G3 2nd/ 3rd Line Fax Board-AC1
 - Additional Memory Type A (512MB)°
 - System Upgrade RAM-A1
 - Access Management System Kit-A2
 - HDD Data Encryption Kit-B5
 - HDD Data Erase Kit-B2
 - Braille Label Kit-E1
 - ADF Access Handle-A1
 - Voice Operation Kit-B1††
 - Voice Guidance Kit-D1
 - Remote Operator's Software Kit-A3
 - Workflow Composer-B3
 - Expansion LAN Board-E1
 - Wireless LAN Board-A1
 - IP Sec Board-A1
 - Removable Hard Disk Drive Kit-C1
- 1200 x 1200 dpi printing resolution is not available with PCL5e.
- * Available with Saddle Finisher-AE2 only.
- ** Requires Universal Send Advanced Features Set-B1 (standard on 3245i/3235i).
- *** Requires Universal Send Security Feature Set-B1 (standard on 3245i/3235i).
- ▲ Requires Digital User Signature Kit-A1.
- ▲▲ Requires PCL Printer Kit-AA1.
- † Requires Additional Memory Type A to display Web Flash content. Requires the PS Printer Kit-AA1 or Direct Print Kit-F1 if printing PDF files.
- †† Requires Additional Memory Type A.
- ††† Requires Color Universal Send Kit-P1 or USB Memory Connectivity Kit-A1.
- ° Standard with imageRUNNER 3245i/3235i models.

Canon
image*ANYWARE*

1-800-OK-CANON
www.usa.canon.com

Canon U.S.A., Inc.
One Canon Plaza
Lake Success, NY 11042

As an ENERGY STAR® Partner, Canon U.S.A., Inc. has determined that these products meet the ENERGY STAR guidelines for energy efficiency. ENERGY STAR and the ENERGY STAR mark are registered U.S. marks. Microsoft, PowerPoint, Windows and Windows Vista are registered trademarks of Microsoft Corporation in the United States and/or other countries. Adobe and Illustrator are registered trademarks of Adobe Systems Incorporated in the United States and/or other countries. Macintosh is a trademark of Apple Inc. CANON, IMAGERUNNER, MEAP, and the GENUINE logo are registered trademarks of Canon Inc. in the United States and may also be registered trademarks or trademarks in other countries. IMAGEWARE is a registered trademark of Canon U.S.A., Inc. in the United States and is a trademark of Canon Inc. in certain other countries. IMAGEANYWARE is a trademark of Canon. All other referenced product names and marks are trademarks of their respective owners and are hereby acknowledged. Specifications and availability subject to change without notice. ©2008 Canon U.S.A., Inc. All rights reserved.

0121W538
0608-3245/3235-100M-LCR

